



ScreenGuard™ & Security

Hardware Guide

Place an order of \$500 or more for Whitco, Lockwood, Anthony Innovations & Austral hardware products and YOU'LL AUTOMATICALLY GO INTO THE DRAW TO WIN!



WIN 1 OF 3
NORCO Storm 5
27.5" Mountain Bikes
per state*

\$639 value





SCREENGUARD SLIDING DOOR

The ScreenGuard™ Stainless Steel Security Mesh System for windows and doors is designed to protect your family and your view. Screenguard aluminium frames are made of T6 extruded aluminium with 316 marine grade stainless steel mesh that provides both strength, protection and quality.

- Corrosion Resistant
- Australian designed and engineered
- Resistant against mesh removal
- Easy to fabricate and install
- Taut mesh
- Made of 316 grade stainless steel mesh
- Bushfire rated
- Tested to Australian Standards AS 5039-2003 and BAL 40 Rating

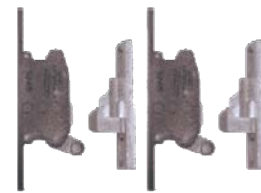


DESCRIPTION

Leichhardt Sliding Door Lock
- cylinder sold separately *

CODE

2150



DESCRIPTION

Leichhardt Standard Triple Lock Kit

CODE

2150-3ST

Leichhardt Reverse Triple Lock Kit
- height 950 to 105mm

2150-3RV



DESCRIPTION

Leichhardt 2 Point Lock - cylinder sold separately

CODE

2165



DESCRIPTION

SD7 Sliding Door - cylinder sold separately *

CODE

2151



DESCRIPTION

Cable SD7-3 Point High Kit

CODE

2151-3CH



DESCRIPTION

SD9 Horizon Sliding Door Lock
(Black & white)

CODE

2153

SCRENGUARD SLIDING DOOR



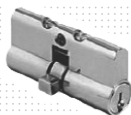
DESCRIPTION

DESCRIPTION	CODE
8653 Sliding Door Lock - cylinder sold separately	2155-BL
8653 3 Point Lock Kit	2155-3PT
High Strength Strike - to suit 8653 Lock Stainless Steel	2155-STK



DESCRIPTION

DESCRIPTION	CODE
Keyed Sliding Push Lock - K.N 32381	2290



DESCRIPTION

DESCRIPTION	CODE
2 x 5 Disc Cylinder - 60mm Keyed Alike x 10	2200-P
2 x 5 Disc Cylinder - 60mm Keyed Different x 10	2201



DESCRIPTION

DESCRIPTION	CODE
2 x 5 Pin Cylinder - 45mm Keyed Alike x 10	2220
2 x 5 Pin Cylinder - 45mm Keyed Different x 10	2223



DESCRIPTION

DESCRIPTION	CODE
Soft Door Closer	2375



DESCRIPTION

DESCRIPTION	CODE
Auz-fit Security Door Roller - 250 p/box	2450



DESCRIPTION

DESCRIPTION	CODE
Security Door Top Guide - to suit 21.2mm	2863



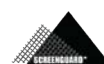
DESCRIPTION

DESCRIPTION	CODE
Security Door Top Guide - to suit 23.5mm	2862



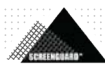
DESCRIPTION

DESCRIPTION	CODE
Heavy-duty Offset Roller (30kg) - 200 p/box	2451



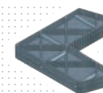
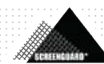
DESCRIPTION

DESCRIPTION	CODE
10mm Guide Button for Served Track	2686



DESCRIPTION

DESCRIPTION	CODE
Fire-resistant PVC L-seat - 100m/roll	2510-FIRE-R100
Fire-resistant PVC Wedge - 33 LN/pack	2510-FIRE-W100



DESCRIPTION

DESCRIPTION	CODE
Nylon Corner Stake	2659



DESCRIPTION

DESCRIPTION	CODE
Aluminium Corner Stake	2655

* Standard stock colours available. Please contact your local Darley branch for availability.



SCREENGUARD HINGED DOOR

The ScreenGuard™ Stainless Steel Security Mesh System for windows and doors is designed to protect your family and your view. Screenguard aluminium frames are made of T6 extruded aluminium with 316 marine grade stainless steel mesh that provides both strength, protection and quality.

- Corrosion Resistant
- Australian designed and engineered
- Resistant against mesh removal
- Easy to fabricate and install
- Taut mesh
- Made of 316 grade stainless steel mesh
- Bushfire rated
- Tested to Australian Standards AS 5039-2003 and BAL 40 Rating



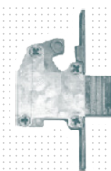
Whitco
SECURING YOUR HOME

DESCRIPTION

CODE

MK2 Hinged Door Lock - cylinder sold separately

2100



Whitco
SECURING YOUR HOME

DESCRIPTION

CODE

MK2 Standard 3 Point Kit

2100-3ST

MK2 Reverse 3 Point Kit

2100-3RV



Whitco
SECURING YOUR HOME

DESCRIPTION

CODE

Extended Strike

2100-Ext



Yale

DESCRIPTION

CODE

Quatro Hinged Security Door Lock
- cylinder sold separately

2103-BL/WH

Yale Quatro 3 Part Lock Kit

2103-3ST



Austral Lock
Expect to be protected

DESCRIPTION

CODE

Ultimate Hinged Door Lock *

2131



Austral Lock
Expect to be protected

DESCRIPTION

CODE

Cable Ultimate 3 Point High Kit

2131-3CH

Cable Ultimate 3 Point Low Kit

2131-CH/S

* Standard stock colours available.
Please contact your local Darley branch for availability.

SCREENGUARD HINGED DOOR



DESCRIPTION

Cable Ultimate 3 Point Low Kit

CODE

2131-3CL

Cable Ultimate 3 Point Low Straight Kit

2131-3CL/S



DESCRIPTION

Ultimate with Care Taker - cylinder sold separately *

CODE

2131CT-SC



DESCRIPTION

Elegance Hinged Door Lock - cylinder sold separately

CODE

2156



DESCRIPTION

Wide Striker Plate for Elegance

CODE

2156-EXT



DESCRIPTION

Elegance 3 - Point Cable High Kit

CODE

2156-3CH

Elegance 3 - Point Cable Low Kit

2156-3CL



DESCRIPTION

8654 Hinged Security Door Lock
- cylinder sold separately

CODE

2105

8654 High Security 3 Point Lock Kit

2105-3HS

8654 Standard 3 Point Lock Kit

2150-3ST

8654 3 Point Lock Kit with Straight Bolts

2105-3PK/PBT

8654 Extra-wide Strike

2105-EXT



DESCRIPTION

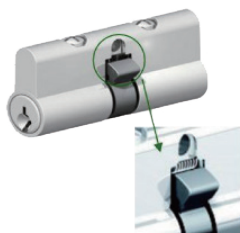
HD7 Hinged Door Lock - cylinder sold separately

CODE

2120



SCREENGUARD HINGED DOOR



DESCRIPTION

Pin Cylinder - Keyed Alike

CODE

2202

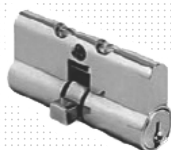


DESCRIPTION

Wafer Cylinder - Keyed Alike

CODE

2221



DESCRIPTION

2 x 5 Pin Cylinder

CODE

2200-P

2 x 5 Pin Cylinder - Keyed Different

2201



DESCRIPTION

Pin Cylinder - Keyed Different

CODE

2203

Pin Cylinder - Keyed Alike

2204



DESCRIPTION

2 x 5 Disc Cylinder - Keyed Alike

CODE

2220



DESCRIPTION

2 x 5 Pin Cylinder - 20 x Keyed Different

CODE

2223



DESCRIPTION

Hinged Door Closer - 18kg max *

CODE

2300



DESCRIPTION

Hinged Door Closer *

CODE

2301



DESCRIPTION

403 Hinged Door Closer - 21kg max *

CODE

2303

* Standard stock colours available. Please contact your local Darley branch for availability.

SCRENGUARD HINGED DOOR



DESCRIPTION

Security Door Hinges

CODE

2400



DESCRIPTION

Hinges Packer 1mm Aluminium

CODE

2420



DESCRIPTION

316 Stainless Steel Security Door Hinge

CODE

2401

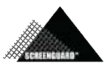


DESCRIPTION

316 Stainless Steel Security Door Hinge with Safety Prong

CODE

2402



DESCRIPTION

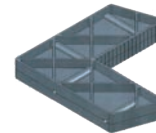
Fire-resistant PVC L-seat - 100 m/roll

CODE

2510-FIRE-R100

Fire-resistant PVC Wedge - 33 LN/pack

2510-FIRE-W100



DESCRIPTION

Nylon Corner Stake

CODE

2659

WIN 1 OF 3
NORCO Storm 5
 27.5" Mountain Bikes
 per state*

\$639 value

WINNER

screnguard.com.au | 7

WIN 1 OF 3

NORCO Storm 5 27.5" Mountain Bikes per state*



\$639 value



Place an order of **\$500 or more** (ex GST) for Whitco, Lockwood, Anthony Innovations & Austral hardware products and **YOU'LL AUTOMATICALLY GO INTO THE DRAW TO WIN!**

Go to

www.darleyaluminium.com.au/hardware-promo

TERMS AND CONDITIONS

Promotion Period:

2nd November until 18th December 2020

Rules of entry for competition:

Place an order of \$500 or more for Whitco, Lockwood, Anthony Innovations & Austral hardware products and you'll automatically go into the draw to win.

Prizes:

*** Win 1 of 3 NORCO Storm 5 27.5" Mountain Bikes per state, valued at \$639 each.**
Total prize value \$1,917 per state.
(Eligible states include NSW, QLD, VIC & WA)

For more detailed Terms & Conditions go to
www.darleyaluminium.com.au/hardware-promo



Find out more about ScreenGuard. Go to www.screenguard.com.au or contact your local Darley Aluminium branch using the contact details below.



New South Wales
(02) 8887 2888
sales@darleyaluminium.com.au

Victoria
(03) 9238 3888
salesvic@darleyaluminium.com.au

Queensland
(07) 3287 1888
salesqld@darleyaluminium.com.au

Western Australia
(08) 9437 2999
saleswa@darleyaluminium.com.au